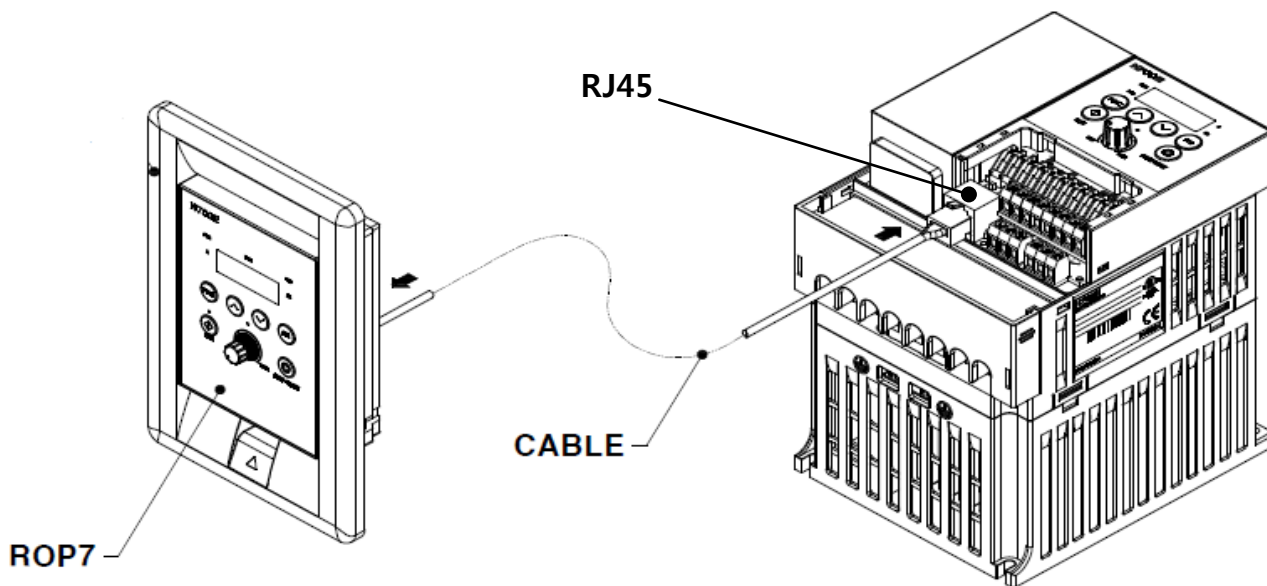


# 【 ROP7 USER'S GUIDE 】

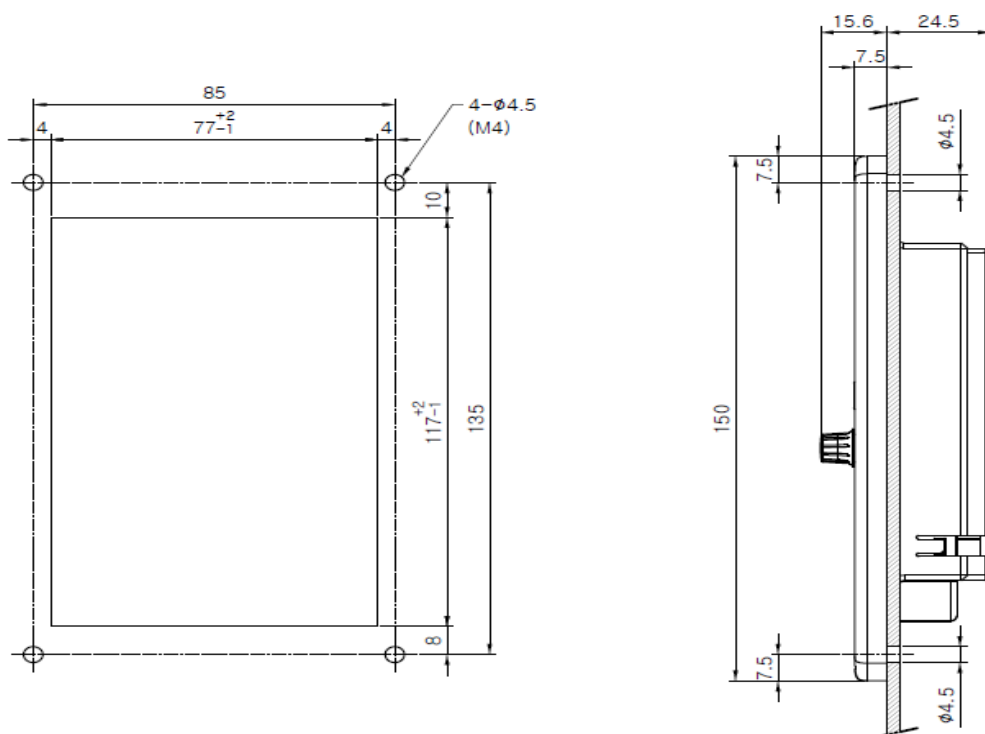
## 1. ROP7 Option Installation

Insert the extension cable to RJ45 sockets in N700E VFD and ROP7 options like the picture below. The extension cable (UTP CAT5e cable, 1 m (ordering code : NOP1-1A) or 3 m (ordering code : NOP1-3A), sold separately) is required to connect the digital operator for remote operation RJ-45, 8pin straight through and not included in this ROP7 option.



※ If the VFD series has not RJ45 socket, please contact our sales department directly or your nearest HHI representative.

## 2. ROP7 Dimensions (mm)



### 3. Using the Remote Operator

The basic key operation method is similar to the mounted operator in the N700E series. This ROP7 has two additional functions like as 'Shift' function and 'Read/Copy' function. Please refer to the basic operation method of this ROP7 to the user manual of the N700E series.

#### 3-1. SHIFT FUNCTION MODE

If you want to change the parameter setting of the VFD, 'Shift' function can be easily set the parameter value in the VFD directly.



##### (1st Step)

Select a parameter to change.



##### (2nd Step)

If you press both UP/DOWN button about 1second at the same time, the leftmost digit is blinking. Press the Up or Down key to adjust the leftmost digit to the wanted value.



##### (3rd Step)

If you can select the leftmost digit with UP/DOWN button, press the STR key, and the second digit is blinking. Also, you can adjust the digit to what you want to be.



##### (4th Step)

Repeat the step from 1 to 3 and press the STR key at the rightmost digit. When you press the STR key at the rightmost digit is blinking, the code setting is completed.

## 3-2. READ/COPY FUNCTION

The 'rEAd' function can easily save the parameter settings from the VFD and the 'CoPy' function can easily copy the same parameter settings from the ROP7 eeprom to the connected VFD.(Note : The ROP7 can perform the 'rEAd' function about 100,000 times.)

- ① P01 (READ) : Save the parameter setting from the connected VFD to the ROP7
- ② P02 (COPY) : Copies the parameter settings from ROP7 to the connected VFD.
- ③ P03~P07 can be set F~H code size

### 3-2-1. Using the READ Function



#### (1st Step)

Press FUNC/UP button simultaneously about 1~2 seconds.  
P code is displayed.



#### (2nd Step)

Select the parameter 'P01' and Press 'FUNC' key, the display mode is changed to 'rEAd' function mode.

Display is 'rEAd'



#### (3rd Step)

Press 'STR' button in the 'rEAd' state.

Select 'YES' with UP/DOWN button to read function (Read allowable), press STR button for read the parameter from the connected VFD. Select 'no' for the 'rEAd' disable.

### 3-2-2. Using COPY Function

'CoPy' Function is similar to READ Function. Select P02 at the 2nd Step,

Display is **CoPy** . If you select "YES" then 'CoPy' Function is begins.